

32/541

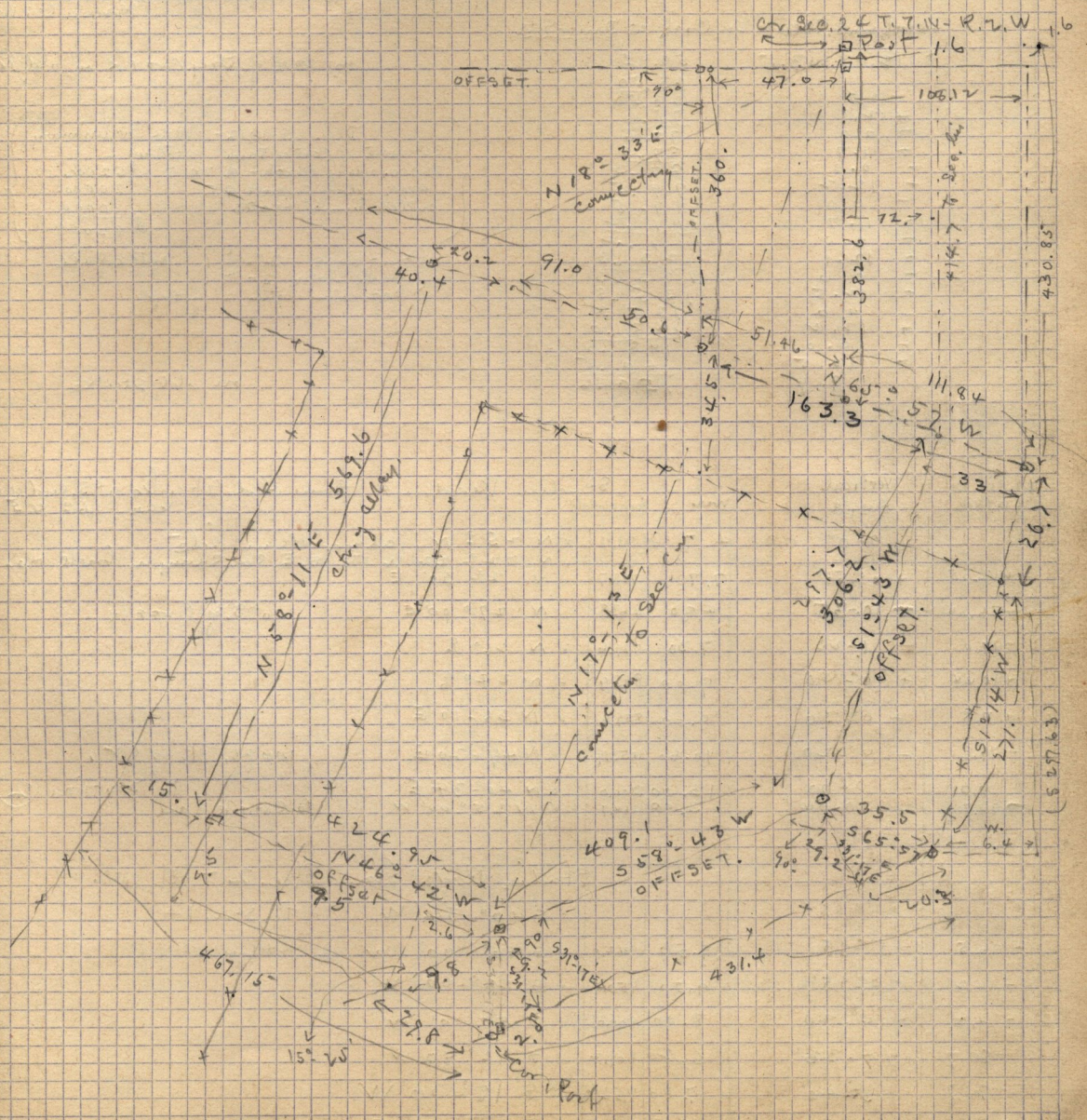
Ann's Ferrin - Wada - Ann's Ferrin - Francis Ferrin and Philip Ferrin  
to James W. Ferrin - Mar. 9 - 1899 consideration \$1.00

135

Pt. S.E. 1/4 of S.W. 1/4 - Sec. 24, T. 7. N - R. 2. W - B. 2. at N.W. cor  
and S.E. 1/4 - thence E. 5.75 ch - S 34° 45' W 6.80 ch - South 3.54 ch -  
S 57° 51' W 1.72 ch - S 57 1/2° W 320.1 feet - N 48 3/4° W 489.0 ft - N 57 3/4° E  
528.0 ft - N 64° W to N. line of said S.W. 1/4 - Sec. - thence E. 12.92 ch to Bay.

Surveyed July 7 - 1912  
Will Stout & Eugene Cairns as it.

Recorded Sep. 30 - 1899 -



(5 297.63)